

# WARPSPEED

## Warspeed Supply Chain Solution

*Based on user roles and user rights WarpSpeed ensures that your employees process all logistical operations using a modern user interface.*

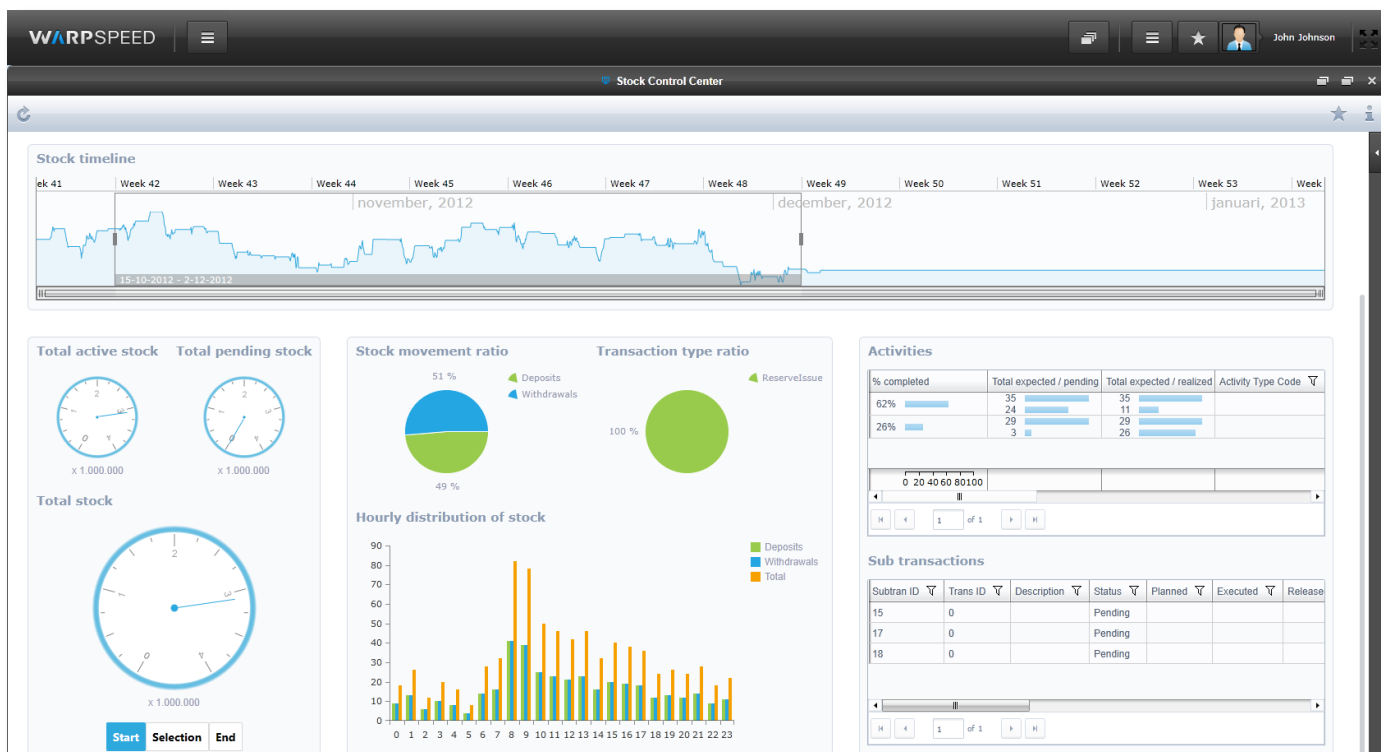
*Your employees can work at any chosen location because WarpSpeed works within an Internet browser.*

Warpeed extends the boundaries of your company's performance in logistics. It is the first and only process based supply chain solution which enables you to design and implement logistic processes within the software itself!

Processes can be implemented on a company, customer or item level. As a result of a process, user interfaces are offered to the end-user by means of workflow by which we have eliminated the old-fashioned labyrinth of menu's and uncorrelated functions. Components like EDI, label printing, KPI's, and reporting are inherent to the system.

Integration services will fluently exchange transactions from and to the ERP. Using cutting-edge web based technology, Warspeed will enhance your position compared to your competitors and help you to fluently integrate business processes with suppliers and customers.

Stock Control Center



## Streamline your logistics processes

The control of people in the workplace with real-time inventory information ensures that your organization always knows exactly what the status of an order is and what resources are available.

You have insight in all your warehouse processes through the available KPI monitors on your screen. You control your warehouse and determine which customers will be supplied.

WarpSpeed makes use of entry and removal algorithms for receiving and processing orders.

WarpSpeed improves the productivity of your order pickers and makes their production measurable. By measuring its performance the warehouse will immediately perform better.

Each pallet movement is recorded and monitored to enable you to perfect track and trace within your organisation.

With WarpSpeed you get a web-based logistics solution in your organisation that will boost your logistics to a higher level!

The image displays two overlapping screenshots of the WarpSpeed software interface. The top screenshot shows the main menu on the left with categories like Security, Master Data, Localities, Maintenance, Business, Running Data, Applets, Control Data, and Reporting. The right pane shows a 'View Costcenters' window with a table of costcenters.

Code	Name	Description
Maintenance	Maintenance	Maintenance
Marketing	Marketing	Marketing
Planning	Planning	Planning
R&D	R&D	Research and Development

The bottom screenshot shows the 'Process Manager' window, which features a toolbox on the right and a central workspace with a flowchart. The flowchart starts with a 'Begin' node, followed by 'Replenishment', 'Print pickbon', 'Pick', 'Afmelden pickorder', 'Print SSCC labels', 'Print pakbon', and ends with an 'End' node.